

Diabetes Study in db/db Mice

The Db/db mouse model is a well established animal model for the study of pathogenesis and evaluation of therapeutic properties of new drugs and formulation for Type II Non-Insulin Dependent Diabetes Mellitus. Elevations of plasma insulin begin at 10 to 14 days and elevations of blood sugar at four to eight weeks. This model is also suitable for the study of diabetic neuropathology and nephropathy.

A Standard Protocol for Type II Diabetes has been developed to facilitate your study design. This protocol can be customized as needed to meet your specific objectives.

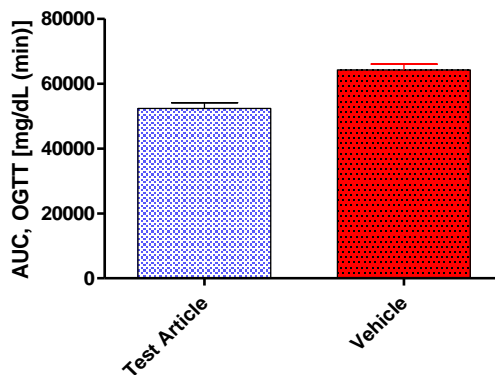
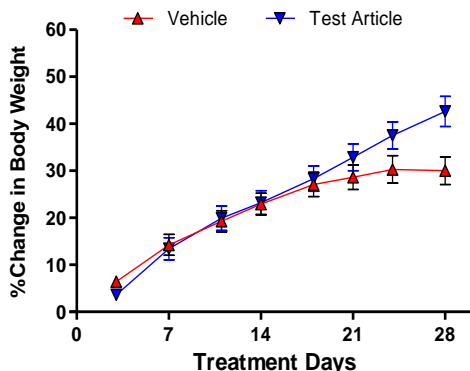
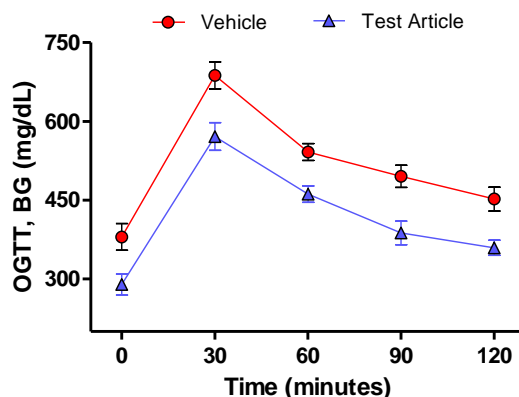
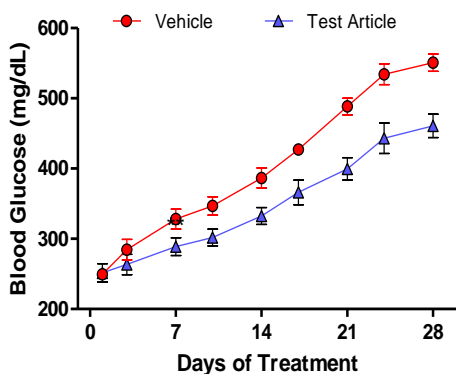
Study Design

Following acclimation, mice are randomly assigned to groups according to the blood glucose levels. Mice are dosed according to the study protocol through one of the route of the administration [PO, IP, SC, IV] for 2weeks to 12 weeks.

Observation: Blood glucose and Body weight
 Glucose tolerance test (GTT)
 Serum Triglyceride, Total Cholesterol, and Free Fatty Acid analysis
 Plasma or serum insulin, HbA1c and
 Major tissue collection and preservation

Report: Report includes detail procedure, appropriate analysis and raw data .

Experiment: Strain db/db, Male, n=8/group, Vehicle: PBS; OGTT performed on Day 28



IMPORTANT: Our services are responsive to client needs, customizing protocols, fast results, expert consultation and flexibility. Invitek intends to expand with new therapeutic areas, models, and assays, contact us to discuss your specific needs.